

COMPANY IDENTITY

Legal Name	Knowledge Management Consultants (KMC) Ltd.
Year of Establishment	2008
Country of Registration	Bangladesh & United States of America (USA)
Type of Legal Entity	<p>i. Dhaka City Corporation, Registration No. 0707394 Dated: 30th July 2008 under Dhaka City Corporation Ordinance 1983 (Ord. XL of 1983), Section 69.</p> <p>ii. Joint Stock Companies & Firms, Bangladesh, Registration No. C-104264/12 Dated: 4th September 2012</p> <p>iii. Department of States, Pennsylvania, United States of America (USA) Entity Number: 7576888</p> <p>iv. ISO 9001:2015-Registration Number-20011385</p>
Contact Person	<p>Kh. Khairul Matin, Managing Director Cell: +8801741127736 Email: khairulmatin@gmail.com</p>
Address	<p>i. Bangladesh Office Address: Green Trade Point, Plot-07, Level-08, Bir Uttam AK Khandakar Road, Mohakhali C/A, Dhaka-1212, Bangladesh</p> <p>ii. USA Office Address: 413 W 6TH STREET, Lansdale PA 19446, Pennsylvania, United States of America (USA)</p>
The key area of Expertise	<ul style="list-style-type: none"> ❖ Feasibility Study ❖ Census, Socioeconomic studies ❖ Land survey, Demarcation ❖ Review relevant land acquisition related documents. ❖ Collection of Latest survey gazette information ❖ Confirmation of Alignment (Right of Way) ❖ Collection of Mouza Maps & Khatians ❖ Collection of Latest Mouza map and Digitalization ❖ Preparation of layout plan with appropriate scale if required. ❖ Video capturing on the alignment ❖ Drawing of alignment on tracing paper ❖ Tracing the map and printing on Tracing Cloths ❖ Prepare plot index ❖ Prepare the "Cha" form ❖ Collection of Land Rate, Structure Rate and Crops Rate etc. ❖ Preparation of other documents if required as per Immovable Land Acquisition and Requisition Act 2017, DC office and Land Ministry. ❖ Finalization of LAP and submit to the PMU/RB to submit the DC office. ❖ Digitalization of Mouza Maps (GIS Mapping) ❖ Georeferencing hard copy maps and GIS map preparation

	<ul style="list-style-type: none"> ❖ Geographic data collection and preparing geo database ❖ Initial Poverty & Social Assessment ❖ Environmental Management and studies ❖ Disaster Management ❖ Development Training Module and IEC materials ❖ Gender awareness activities ❖ Resettlement & Social Management Framework ❖ Resettlement Planning and Implementation ❖ Topographic Survey ❖ Land Acquisition Planning and Implementation (collection of geospatial data through physical feature survey (primary source) & satellite imagery (secondary source) and processing of spatial data in GIS platform (ArcGIS/QGIS/Google earth pro/SASplanet etc), managing geospatial data using geodatabase) ❖ Preparation of Safeguard Documents ❖ MIS and Data Management ❖ Livelihood Restoration Program ❖ Environmental Impact Assessment ❖ Monitoring and Evaluation <p>As a pioneer organization, KMC has introduced Land Acquisition and Resettlement Management Tracking System (LARMTS) in implemented projects for ensuring the accountability and transparency for all land acquisition and resettlement activities.</p>
--	--

❑ INTRODUCTION

Knowledge management Consultants (KMC) Ltd. was established in 2008 with a view to provide consultancy services in the development sector of Bangladesh. Over the decade, it has gathered experience in land survey, demarcation, geo-referencing, mouza digitization, preparation of land acquisition plan (LAP) and preparation of Resettlement Action Plan (RAP), and implementation of LAP and RAP in various large-scale projects implemented in the country. Since its inception, KMC has conducted large number of socio-economic baseline survey, feasibility study, Impact study with monitoring and study on poverty and social assessment. Also, have experience in preparation of Social Action Plan (SAP), Environment Impact Assessment (EIA), Social Management Plan (SMP), Gender Based Violence (GBV), Gender Action Plan (GAP) and other social safeguard documents. The expertise of KMC is mostly in preparation, implementation & monitoring in Land Acquisition and Resettlement issues where KMC has conducted various resettlement surveys, impact assessment, sustainability of the social safeguard implementation followed by the existing policies and guidelines of the donor agencies. KMC has been running as a limited firm duly registered with Joint Stock Company and registered with the department of State of Pennsylvania, USA.

KMC is a multidisciplinary organization having specialization in the field of socio-economics,



resettlement, environment, population, health, education, agriculture & forestry, fishery, human resource development, legal issues especially in rural development, engineering and technology since its establishment. The firm also has proven capability in conducting feasibility study, project design/preparation, management & supervision, socioeconomic, environmental baseline, resettlement & engineering survey and computer application including data entry, database management, MIS, ICT and software development.

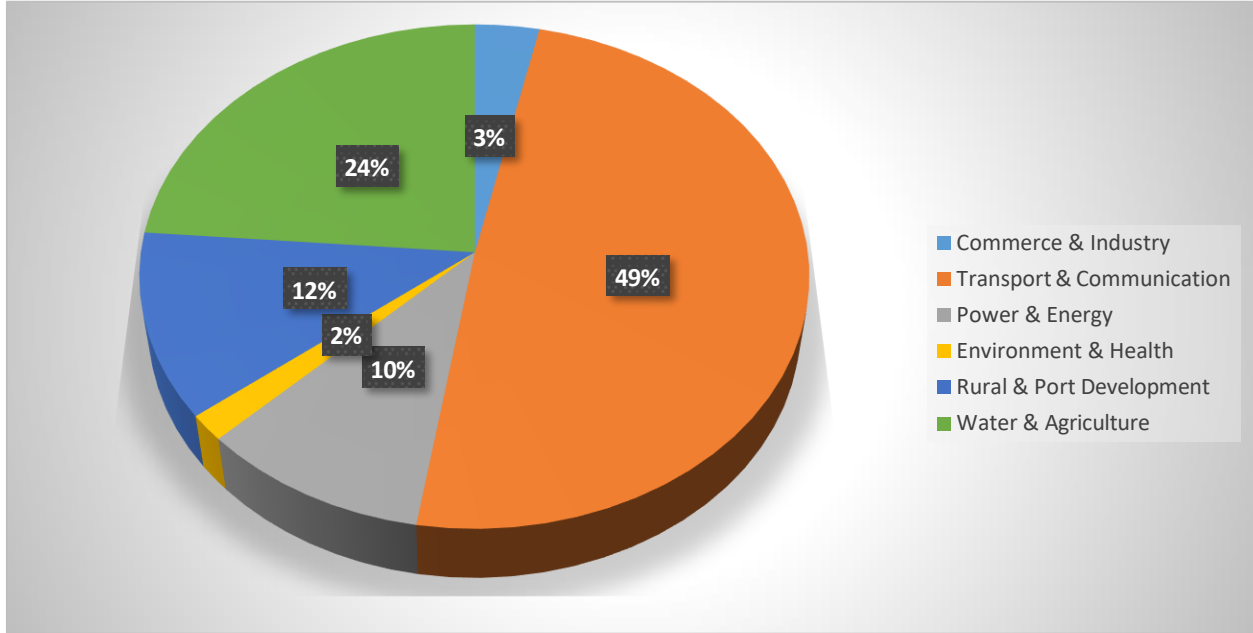
KMC has steadily consolidated its expertise in developing projects and has acquired high reputation. Presently development projects have multidisciplinary assignments and acquired specialization its various fields. Based on the needs, KMC is expanding its activities day by day in different field to develop sectors of complementary expertise and strengthen firm's capacity. The company is committed to provide high quality services for the clients by providing optimum efforts to attain best performances.

The scope of works of KMC are not only limited to covering the fields/sectors of population, health, education, agriculture & forestry, fishery, human resource development, legal issues especially in rural development, engineering and technology since its establishment. The firm also has proven capability in conducting feasibility study, project design/preparation, management & supervision, socioeconomic, environmental baseline, resettlement & engineering survey and computer application including data entry, database management, MIS, ICT and software development.

Its scope of services, however, embodies the areas of (not exhaustive):

- Project Identification & Formulation
- Pre-feasibility/Feasibility Studies
- Project Design, Monitoring & Construction Supervision for Infrastructure Development
- Socio-economic Studies/ surveys & Impact Assessment
- Land Acquisition & Resettlement Studies including RAP & LAP preparation and implementation
- Economic & Financial Analyses
- Environmental Impact Assessment
- Community Development
- Productivity Improvement Development
- Regional and Urban Planning
- Preparation & Evaluation of Contract Bids
- Institutional & Policy Analyses/Studies
- Benefit Monitoring & Evaluation Studies
- Human Resources Development (HRD)
- Training and Institutional Development
- Information & Communication Technology (ICT)

PROJECT STATUS BY CATEGORY



GOAL

Bangladesh is one of the most densely populated and developing countries in the world. Our population is increasing day by day. Unemployment is one of our national problems caused hindrances to major development. This is true that improvement of qualitative & sufficient technological knowledge, we can overcome these aforesaid problems for our nation to a large extent.

On the other hand, considering its geographical position and natural resources, Bangladesh is one of the most affluent countries in the world and currently is running to be listed as one of the most developed countries in the world by 2040. To achieve this goal, among others Bangladesh should have proper planning for human resource development in the form of skill development & proper training on modern technological know-how adequately to fill up the gaps of required skilled persons for the optimal utilization of our natural resources.

Considering the above, the goal of KMC as a development partner is to put our maximum efforts and effective contributions to make Bangladesh a developed country considering both economically and technologically. Moreover, we have the goal to participate in different deployment programs with different development partners to eliminate poverty situation and unemployment problems in our nation and simultaneously during different development processes including infrastructural development of the country.

REASONS FOR CHOOSING KMC

In the modern competitive business, product differentiation makes the difference between the leader and the rest of the pack. KMC can introduce a unique proposition in your offerings to your clientele. Our experts have gained education, and professional experiences in the UK, USA, Australia, Japan, and Bangladesh. They have engaged in developing the very infrastructure services to the clients as per requirements. KMC has enough experience and access to sophisticated modeling technologies, which



would support your project implementation and boast world-standard technologies.

KMC professionals have been engaged in various public infrastructure projects across Bangladesh and abroad. KMC believes in Bangladesh's development trajectory. We want to grow along with the localities we serve. We also believe in Client relationships and the sustainability of our projects. Therefore, you have a long-term partnership with us who will stay involved with you all along the project life cycle.

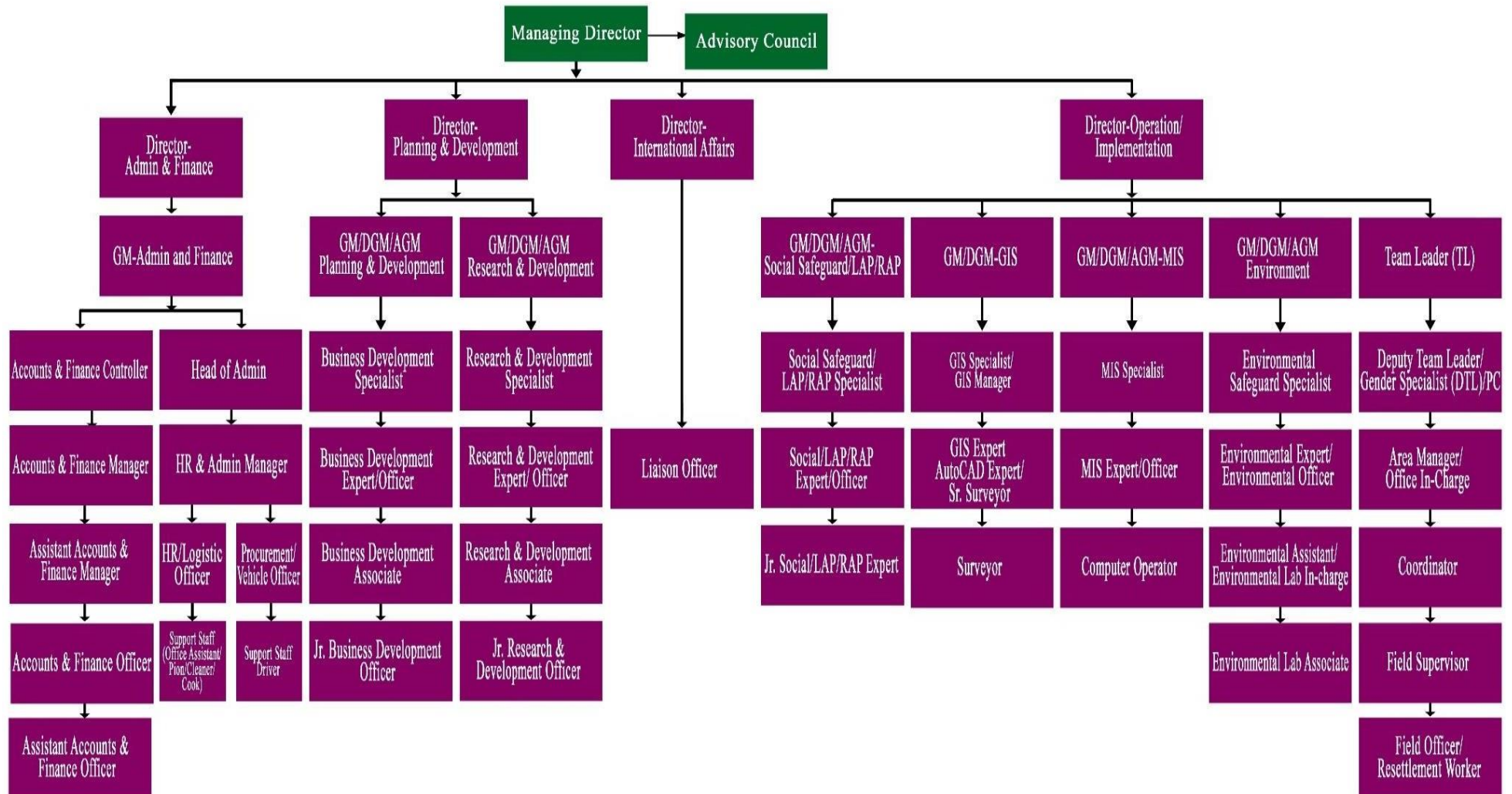
KMC has access to the latest modeling and Autodesk technologies developed by Bentley, Autodesk. Our experts are also adept in free modeling solutions such as Civil 3D and Midas Civil. Our professionals have worked with leading consultancy service providers in the UK and Bangladesh. We are confident in providing you with a solution that is the right fit for your utility. Outsource your project and we will provide you with the service at a competitive rate without compromising on quality. However, the specific reasons are:

- KMC has a long-standing experience in Bangladesh working with several overseas/international companies of different countries with the required expertise compatible with any development projects. From its inception to till date KMC worked & completed a good number of projects in different sectors in the form of conducting feasibility studies/project preparation, implementation, etc. These include Land Acquisition & Resettlement study & Land Acquisition & Resettlement Plan (LARP) preparation, Socio-economic, and environmental impact Studies, Technical Survey and Investigation, Feasibility Study, Detail Engineering Design and Construction Supervision of Transport & Infrastructure, Agriculture & water resources, and Water & Environment Sectors.
- Our expertise is quite diverse and ranges from the projects' feasibility level investigation; social and environmental impact assessment; detailed engineering design; construction supervision; capacity strengthening; and stakeholders' participation up to the mark of client satisfaction.
- We have recently implemented and are currently working on several other projects in Bangladesh having great relevance to the proposed Consultancy Services.
- The basic principle underlying our approach is that we perceive the Clients' challenge as our own, which we shall endeavor to solve with their full consent and to satisfaction.
- We are always looking for adding value to our services for the benefit of our clients. Apart from our extensive experience in natural resources management, we combine fluently our expertise in the fields of capacity building, financing structures, and marketing & communication.
- Our team members mostly belong to the permanent & payroll staff of our company. They are also core employees of our company. Therefore, we are confident about their capability and would be able to draw up additional knowledge and resources within the company.
- Our company is a leading consulting firm in the conduction & preparation of LARP, ESIA, hydraulic modeling, engineering, and project implementation, construction supervision, and project management, as well in our home markets and abroad, as demonstrated by the project references presented.
- We are committed to providing high-quality Consultancy Services, according to international standards and procedures.



- We are fully conversant with the latest developments in contract management (FIDIC and other contract forms).
- Through recent work with various organizations both at home and abroad, we are fully aware of their strengths and weaknesses through which we can ensure that our project implementation plans, the tender documents, etc. will contribute to the success of the project.

KMC Organogram



Knowledge Management Consultants (KMC) Ltd.

Address: Green Trade Point, Plot-07, Level-08, Bir Uttam AK Khandakar Road, Mohakhali C/A, Dhaka-1212, Bangladesh

Phone: 02-55041065 | **Cell:** +8801839929400 | **Email:** kmconsultants1@gmail.com

Website: www.kmcltd.org

❑ SCOPE OF EXPERTISE

KMC specializes to render comprehensive professional services in the following sectors and opt to expand in new sectors with the advancement of advanced information technology and modern time.

❑ LAND ACQUISITION PLANNING

- ❑ Collection of Mouza Maps, Khatians, Name & Case Number
- ❑ Preparation of 'Cha' Form, 'Uma' Form, Field Book ('Gha' Form)
- ❑ Collection/Checking/Review of the Cadastral & Mouza Maps (RS and BS)
- ❑ Preparation of Land Scheduling
- ❑ Collection of land ownership details (recorded)
- ❑ Preparation of Plot Index
- ❑ Digitalize Mouza Map
- ❑ Preparation of Route in tracing clothes
- ❑ Taking still pictures and video of the land in consultation with DC offices
- ❑ Preparation of layout plan with appropriate scale
- ❑ Preparation of documents in land acquisition and requisition-related activities as per Act-2017

❑ LAND ACQUISITION PLAN IMPLEMENTATION

- ❑ Assist in serving notice u/s 4
- ❑ Conduct Joint Verification
- ❑ Collection of Rate/Value of Land, Structure, Crop, Tree, etc.
- ❑ Assist in serving notice u/s 7
- ❑ Preparation and estimation of compensation for project-affected land, structure, standing crops, trees, forest, and other lost assets
- ❑ Assist in preparation of LA estimate and award book Assist in serving notice under section 8 by DCs
- ❑ Preparation of other documents required as per Immovable Land Acquisition and Requisition Act 2017, DC Office, and Land Ministry
- ❑ Assist PAPs in updating records of rights and receiving compensation
- ❑ Participate in the preparation of Land acquisition plans and requisition activities with respective DC offices.
- ❑ Assist Affected People or other parties to get Compensation for lost properties
- ❑ Assist the DC office during the transfer of Land
- ❑ Resolve the Dispute/Arbitration (if any)

INFRASTRUCTURE

KMC offers expertise and experience in the following fields:

- Rural Development
- Urban and Regional Development
- Eco-tourism Development



RURAL DEVELOPMENT AND CONNECTIVITY

Conducting social impact studies, planning, designing, and implementing different infrastructure projects e.g., growth center, culverts/bridges, and rural roads for connectivity for sustainable economic development including environmental and social assessment and monitoring and evaluation.

URBAN AND REGIONAL REGENERATION

Structural and master planning, detailed area planning, urban infrastructure planning, feasibility studies, detailed engineering and construction supervision with social and community development, and environmental management.

TRANSPORT

KMC services encompass the specific sectors:

- Traffic and Transportation Engineering
- Transportation Planning and Demand Modelling
- Micro Simulation and Traffic Forecasting
- Roads and Highways
- Bridge, Flyover, and Expressways
- Port and Harbor
- Jetty, Railways, Airports, etc.



Our consultants help you to find the best feasible solutions with holistic planning. Next, our technical and financial specialists prepare, design, estimate, and support you in applying proper tender procedures for your projects. Whereas, our engineers and other specialist are there to manage contracts and supervise the works, taking responsibility as your trusted onsite representative with environmental and social safeguard monitoring. Upon completion, our consultants are willing to design and provide the tools for the operation and maintenance of your system.

WATER & SANITATION

KMC offers expertise and experience in the following fields:

- Water Supply, Sanitation, Sewerage, and Urban Drainage
- Environmental Management
- Wastewater Treatment
- Social Assessment
- Climate Changes & Adaptations

WATER SUPPLY

KMC has expertise and capabilities for doing the following activities:

- Development of Water Supply Master Plan
- Future water demand projection and provide corresponding capital improvement
- Design and analysis of water distribution systems and transmission lines including pump facilities, fire flow, and storage requirements
- Development of network models to represent existing systems including steady-state and EPS calibrations and system performance evaluation
- Non-Revenue Water management based on District Metered Area (DMA)
- Energy optimization, criticality analysis, water quality evaluation of distribution system
- Building water usage efficiency audits

WASTEWATER SYSTEM

KMC has expertise and capabilities for doing the following activities:

- Development of Sewerage System Master Plan
- Development of a collection network model and analysis to determine the existing capacity shortfall
- Model calibration and simulation to provide solutions for Combined
- Sewer Overflow (CSO) and Sanitary Sewer Overflow (SSO) issues

- Analysis of Rainfall data and flow monitoring data to determine rainfall dependent inflow-infiltration (RDII) characteristics of sewer sheds
- Design of sewer collection network
- Design of wastewater treatment plants (STP, ETP)

STORMWATER SYSTEM

KMC has expertise and capabilities for doing the following activities:

- Drainage system detailed design using hydrologic and hydraulic models including storm drains, detention ponds, pump stations, culverts, embankments, smart land-use planning, etc.
- Construction supervision
- Stormwater management in urban areas to address future growth and climate change Floodplain management, watershed analysis, stream stabilization, Low
- Impact Development
- Flood damage assessment and identification of adaptation measures based on spatial data analysis



AGRICULTURE & ENVIRONMENT

KMC offers expertise and experience in the following fields:

- Flood Control and Bank Protection
- Drainage Improvement
- Estuary Development
- Irrigation, and Agricultural Development
- Participatory Water Resources Management
- Capacity Building
- Impact Assessment



Services include:

- Surveys, investigations, and reconnaissance studies
- Project Identification
- Planning, preliminary design, techno-economic analysis, and feasibility studies
- Detailed design and tender document
- Construction supervision and contract management
- Management and training advice
- Monitoring and evaluation

SOCIAL IMPACT ASSESSMENTS & SOCIAL SAFEGUARDS

RESETTLEMENT PLANNING

- Document Review
- Stakeholders & Public Consultation Meetings
- Numbering of the affected HH Structures
- Census and Inventory of Losses (IOL) Survey
- Social Impact Assessment (SIA)
- Socioeconomic Survey
- Property Valuation Survey
- Conduct FGDs
- Safeguard Assessment
- Video Filming
- Preparation of Resettlement Plan

RESETTLEMENT PLAN IMPLEMENTATION

- Collection of CCL from the DC office
- Collection of legal papers of property from EPs
- Preparation of additional cost estimate and budget for resettlement benefits
- Preparation of database
- Preparation and Issuance of ID Cards
- Preparation of Entitlement File and Entitlement Card (EPEC)
- Disbursement of cash compensation
- Disbursement of additional grants
- Payment of Resettlement Benefits to APs

Knowledge Management Consultants (KMC) Ltd.

Address: Green Trade Point, Plot-07, Level-08, Bir Uttam AK Khandakar Road, Mohakhali C/A, Dhaka-1212, Bangladesh

Phone: 02-55041065 | **Cell:** +8801839929400 | **Email:** kmconsultants1@gmail.com

Website: www.kmcltd.org

- Notice for Encumbrance Free
- Assisting APs in the resettlement process
- Assistance to APs during Relocation
- Conduct the livelihood restoration program
- Assistance to APs in Grievance Redress Procedure
- Identification of Entitled Persons (EPs)
- Issuance of ID Card
- Preparation/updating of payment statement

EXTERNAL MONITORING OF SAFEGUARDS

- Review & verify land acquisition/resettlement implementation
- Evaluate & assess livelihood opportunities and incomes of the Affected Person
- Evaluate quality, sufficiency, and timeliness of delivering entitlements as per approved policy
- Review quality and suitability of relocation sites
- Verify expenditure & adequacy of budget for resettlement activities
- Quantify & qualify the types of conflicts and grievances reported and resolved and the consultation and participation procedures
- Determine mitigation measures needed to meet the need
- Identify lessons learned
- Conducted Monitoring Survey
- Environmental Monitoring

RESEARCH, TRAINING, BASELINE & EVALUATION

- Conduct Baseline, Midline, and End-line study
- Conduct Action Research, Market Research
- Conduct a value chain study
- Psychological assessment
- Develop RPA tools
- Conduct training activities
- Develop manuals and guideline
- Organizational Capacity Assessment
- Community and Public Health Assessment
- Provide legal and advocacy support
- Program development and management
- WASH Assessment, planning, and Management
- Develop monitoring tools
- Conduct external monitoring
- Nutrition and health assessment

ENVIRONMENTAL SAFEGUARDS

- Environmental Impact Assessment
- Ecological Baseline Study
- Biodiversity Conservation Management
- Environmental Management of infrastructure projects
- The environmental quality monitoring-terrestrial and aquatic environment
- Environmental quality mapping using GIS
- Environmental Planning Services
- Industrial Pollution Control and Management
- Social Impact Assessment

- Resettlement and Rehabilitation
- Monitoring and Evaluation of Social Development Projects
- Community Relations and Stakeholder Engagement
- Poverty analysis, social analysis, and livelihood studies
- Hazardous Waste Management
- Urban Air Quality Management
- Air, Water, and Noise Pollution Modeling Services
- Climate Change Assessment Studies
- Institutional and Organizational Strengthening
- Capacity Building
- Environmental Training
- Policy and Regulatory Studies

ENGINEERING SURVEY

- Topographic Survey
- Hydrographic and Hydrometric Survey
- Subsoil Investigation

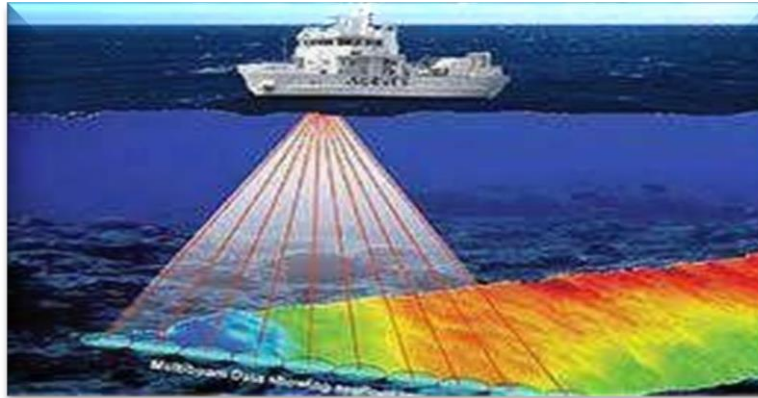
TOPOGRAPHIC SURVEY AND MAPPING

KMC conducts topographic surveys to update land level and land use patterns, and infrastructure development including drainage and irrigation facilities and communication networks. The data is archived and presented in the form of topographic maps for any future use. Geode modeling is carried out to establish geodetic survey data at places where conventional methods of survey cannot be used.



HYDROGRAPHIC SURVEY

KMC has proven experience in collecting the following types of data to support morphological assessment of the rivers for bank protection and drainage improvements such as Bathymetry/Cross sections of the rivers, Bank line movement, Observation of fall velocity, and in-situ measurement of flood plain Sedimentation.



HYDROMETRIC SURVEY

Hydro-meteorological data is essential for the planning, design, and implementation of all water-related projects including irrigation, drainage, and flood control. KMC collects the above data by maintaining the quality through frequent supervision of the collection system in the field as well as systematic processing and consistency check of the data in the office. Major types of data are Surface Water Level, Groundwater level, Liquid flow, Sediment, Rainfall, Temperature, and Pressure.

SUBSOIL INVESTIGATION

KMC has also expertise and experience in Subsoil Investigation. The subsoil investigations serve to describe the properties of the subsurface and to assess the seabed soil as an environmental asset. The purpose of a soil investigation is to determine the engineering properties of soils at the proposed tank site. Soil data is used to:

- Predict the behavior of the foundation
- Minimize uncertainties in foundation design

Different methods of soil exploration for the study of soil profiles are:

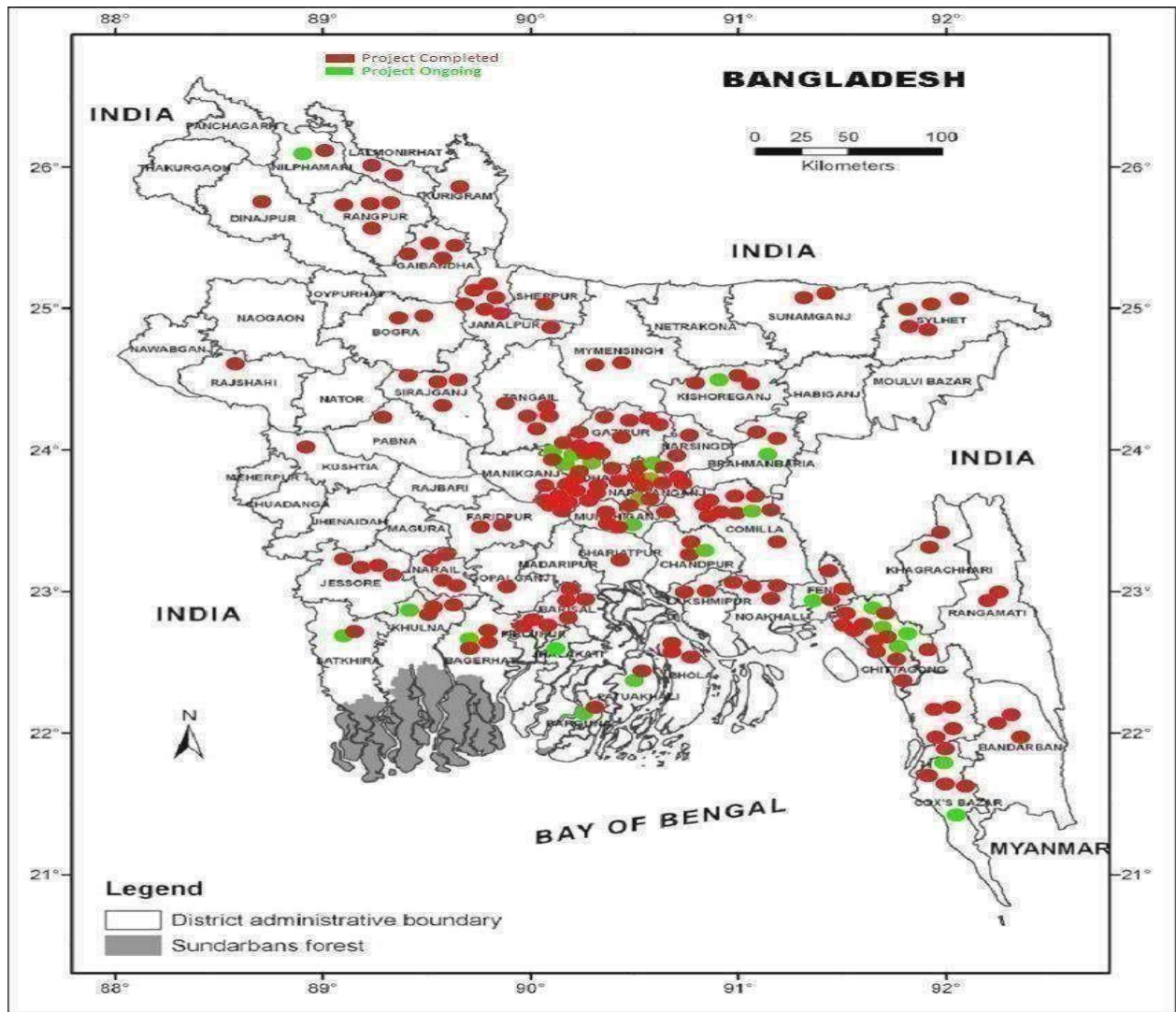
- Open Excavation
- Borings
- Subsurface Soundings
- Geographical Methods



Table: District Coverage of KMC Ltd.

SL	District	SL	District	SL	District	SL	District
1.	Bagerhat	13.	Chattogram	25.	Gazipur	37.	Kurigram
2.	Bandarban	14.	Cumilla	26.	Gopalganj	38.	Kushtia
3.	Barishal	15.	Cox's Bazar	27.	Jamalpur	39.	Lakshmipur
4.	Bhola	16.	Dhaka	28.	Jashore	40.	Lalmonirhat
5.	Bogura	17.	Dinajpur	29.	Jhalokathi	41.	Munshiganj
6.	Barguna	18.	Faridpur	30.	Khagrachari	42.	Mymensingh
7.	Brahmanbaria	19.	Feni	31.	Khulna	43.	Narail
8.	Chandpur	20.	Gaibandha	32.	Kishoreganj	44.	Narayanganj
9.	Narsingdi	21.	Nilphamari	33.	Noakhali	45.	Pabna
10.	Patuakhali	22.	Pirojpur	34.	Rajshahi	46.	Rangamati
11.	Rangpur	23.	Satkhira	35.	Shariatpur	47.	Sherpur
12.	Sirajganj	24.	Sunamganj	36.	Sylhet	48.	Tangail

Figure: District Coverage of KMC Ltd.



OUR VALUED CLIENTS

□ MANAGERIAL AND FINANCIAL MANAGEMENT CAPACITY

KMC has particular managers in each section including operation, implementation, planning, management, finance, and admin led by Managing Director.

Table: List of Managers of KMC Ltd.

Name	Designation	Management Role	Educational Qualification	Years of Experience
Kh. Khairul Matin	Social Safeguard Specialist	Managing Director	<ul style="list-style-type: none"> ▪ MSS in Sociology from Dhaka University 	25
Dr. Javed Iqbal	Financial Management Specialist	Director-International Affairs	<ul style="list-style-type: none"> ▪ Ph.D. (Oxford), Post-doc (Oxford), FCMA (London), FCIMA (London), MBA (Cambridge) 	15
Asma Arefin	Social Safeguard Specialist	Director-Admin & Finance	<ul style="list-style-type: none"> ▪ BSS from National University 	15
Md. Saidur Rahman	Legal Advisor and LA Specialist	General Manager-Admin & Finance	<ul style="list-style-type: none"> ▪ MSS in Political Science from National University ▪ LL. B from National University ▪ BA from National University 	35
Md. Mesbaul Haque	Social Safeguard Specialist	General Manager-Planning & Development	<ul style="list-style-type: none"> ▪ MSS in Anthropology from Rajshahi University ▪ MSS in Development Studies from Khulna University ▪ MS in Environmental Science from Jahangirnagar University 	16
Giasuddin Ahmed	Social Safeguard Specialist	Deputy General Manager-Research & Development	<ul style="list-style-type: none"> ▪ MSS in Sociology from Dhaka University 	25
Md. Nashir Uddin	Environmental Safeguard Specialist	Assistant General Manager (AGM)	<ul style="list-style-type: none"> ▪ M.Sc. in Civil Engineering (Environmental) from DUET 	11

□ MANPOWER/HUMAN RESOURCES

KMC has an adequate number of professional staff related to LAP and RAP activities including Safeguards Specialists, Resettlement Specialists, Land Acquisition Specialists, Legal Experts, IT/MIS Specialists, GIS Experts, AutoCAD Experts, and Gender Specialists. KMC can provide the required professionals as and when required. The table below shows the number of staff in the mentioned position and their key qualifications well.

Table: Key Professionals of KMC by Category

Professionals & Staff	Number
Team Leader (Safeguard Specialist and Engineers)	06
Deputy Team Leader (Safeguard Specialist and Engineers)	09
Gender & GBV Specialist	05
Land Acquisition Specialist/Expert	06
Environmental & Climate Change Specialist	02
Capacity Development & Training Specialist	06
Engineers	05
ILRP Expert	04
GIS Specialist/Expert	07
Kanungo	04
Land Surveyor	26
Survey Coordinator/Monitoring Expert	06
Junior Social Development/Resettlement Expert	09
Financial Sector Expert	03
Agronomist	02
Legal & Advocacy Expert	01
IT, MIS/Database Specialist, Data Administrator/Analyst	11
Economists	01
Other Permanent Experts (Jr. Experts, Admin, Resettlement Supervisor, Resettlement Worker/Assistance, Data Enumerator)	54
Total	167

□ FINANCIAL STATEMENT

KMC have a sound financial turnover over the last few years. The average annual turnover for the last five years stands at BDT 57,042,737/-.

Table: Annual Turnover of the Last Five Years

SL	Year	2017-2018	2018-2019	2019-2020	2020-2021	2021-2022
1.	Total Assets	1,46,77,257/-	1,68,27,254/-	17,400,882/-	22,670,112/-	28,849,763/-
2.	Total Liabilities Payment	1,46,77,257/-	1,68,27,254/-	17,400,882/-	22,670,112/-	28,849,763/-
3.	Total Investment	15,00,000/-	15,00,000/-	1,500,000/-	1,500,000/-	1,500,000/-
4.	Operative Expenditure	99,97,722/-	3,41,50,770/-	23,503,322/-	19,913,873/-	19,302,241/-
5.	Liquid Asset	13,26,669/-	27,29,809/-	126,293/-	1,118,721/-	2,705,771/-
6.	Taxes Paid	13,71,814/-	45,56,787/-	59,40,190	1,696,235/-	4,200,248/-
7.	Profit after Payment of Taxes	20,52,653/-	11,42,915/-	986,376/-	307,652/-	1,309,722/-
8.	Turnover	4,10,04,850/-	7,59,14,316/-	62,931,974/-	51,275,372/-	54,087,177/-

KMC Professionals possess a high standard of education, and vast experience, and are skilled in using modern technology in performing their responsibilities. The professional staffs have excellent knowledge of English and Bengali having exceptional analytical and communication skills. Besides, KMC very often engages professionals/experts specialized in various fields in different projects on a contractual basis. Hence, a list of experts/specialists is properly maintained by the administration of KMC to facilitate the recruitment of such people as and when required.

□ PHYSICAL FACILITIES AND LOGISTICS

KMC possesses a fully functional office (Head Office) in the Banani area of Dhaka, the capital city of Bangladesh, and regional & district offices as well. KMC is well equipped with all facilities including necessary office equipment, a modern computer, and a communication system. KMC is quite capable of providing all essential logistics support to its head office as well as project offices as and when necessary.

Table: Essential Logistics Support

Name of Item	Number
Cars	06
Motor Cycle	12
TAB	44
Printer	05
Desktop	21
Laptop	15
IPS Rahim Afrooz (1200+600 Watt)	01
Survey Equipment	06
Telephone ISD/IDD Lines	02
Corporate Mobile Numbers for All Staff	60
Intercom	16

Knowledge Management Consultants (KMC) Ltd.

Address: Green Trade Point, Plot-07, Level-08, Bir Uttam AK Khandakar Road, Mohakhali C/A, Dhaka-1212, Bangladesh

Phone: 02-55041065 | **Cell:** +8801839929400 | **Email:** kmconsultants1@gmail.com

Website: www.kmcltd.org

Table: List of Survey & Monitoring Equipment

SL	Item	Number	Specification
1.	RTK GPS	2 Units	<p>Topcon GR-5 GNSSReceiver</p> <p>Satellites: GPS, GLONASS, Galileo, BeiDou, SBAS, QZSS</p> <p>Number of Channels: 226 Channel Vanguard Technology TM with UniversalTracking Channels</p> <p>Accuracy: H: 3.0mm + 0.1ppm; V: 3.5mm +0.4ppm in Static ModeH: 5.0mm + 0.5ppm; V: 10mm +0.8ppm in RTK Mode</p> <p>FC-500 Data Controller Licensed Magnet Office Tools Software</p>
2.	Total Station	3 Units	<p>a. Topcon OS-101</p> <ul style="list-style-type: none"> - Accuracy(ISO 17123-3:2001): 1” ± (2 + 2ppm x D) mm - Measuring range (under average conditions) Reflectorless: 0.3 to500 m Mini Prism: 1.3 to500 m One Prism: 1.3 to 4000 m - Operating System: Microsoft Windows CE 6.0/ Magnet Field <p>b. Topcon GM-101</p> <ul style="list-style-type: none"> - Accuracy(ISO 17123-3:2001): 1” ± (2 + 2ppm x D) mm - Measuring range (under average conditions) Reflectorless: 0.3 to 1000 m Mini Prism: 1.3 to 500 m One Prism: 1.3 to 6000 m <p>c. Topcon GTS-255</p> <ul style="list-style-type: none"> - Accuracy(ISO 17123-3:2001): 5” ± (2 + 2ppm x D) mm - Measuring range (under average conditions) Mini Prism: 900 m One Prism: 2000 m
3.	Hand-held GPS	4 Units	<p>Garminetrex GPS 72H Garminetrex 10</p>

Table: List of Funding Agency of our Project

SL	Funding Agency	Number of Projects
01.	ADB	25
02.	Bangladesh Agriculture University	01
03.	European Investment Bank	01
04.	Exim Bank of China	01
05.	GoB	34
06.	GoB & Indian Government	05
07.	Government of India	01
08.	IFC	02
09.	JICA	15
10.	Government of China	02
11.	Seven Circles Cement	01
12.	Asian Infrastructure Investment Bank	01
13.	UNDP	02
14.	UNICEF	01
15.	USAID	02
16.	World Bank	21

PROJECT PORTFOLIO OF KMC

SL No.	Duration	Name of the Assignment	Client
1.	July 2024 to February 2025	Social Assessment and Preparation of Resettlement Plan under Railway connectivity Improvement Preparatory Facility Project of Bangladesh Railway	ADB
2.	March 2024 to June 2025	Consultancy Services for design including Enhancement of Feasibility study, GIS data collection and gathering for 25 towns	DPHE
3.	June 2024 to March 2026	Consulting Services for Renewable Energy Programme Implementation in Bangladesh	IDCOL
4.	January 2024 to April 2024.	Preparation of Land Acquisition Plan (LAP) and Preparation for Resettlement Action Plan (RAP) for 28 KM under Inner Circular Road Project, Dhaka, Bangladesh	Bangladesh Bridge Authority
5.	March 2024 to November 2024	Resettlement Action Plan Study under Preparatory Survey for Southern Chattogram region Water Supply Project.	JICA Study Team & CWASA
6.	January 2024 to April 2024	Consultancy Services for “Social Safeguard Survey and Data Analysis Survey works for Consultancy Services for Detailed Feasibility Study and Design of 6 (six) Important Bridges under different Roads under Roads and Highways Department (RHD), Bangladesh [Contract No.: BCMC/2022-23/S-02]”	Roads and Highways Department
7.	January 2024 to April 2024	Consultancy Services for “Social Safeguard Survey and Data Analysis Survey works for Detailed Feasibility Study and Design of 01 (One) Bridge Adjacent to Zero Point in Mymensingh Town, 02 (Two) Bridges Adjacent to Mymensingh EPZ, 04 (Four) Bridges on Border Road and 2nd Someshwari Bridge Respectively of Mymensingh Zone Under Roads and Highways Department, Bangladesh	Roads and Highways Department
8.	October 2023 to October 2026	Preparation and Implementation of Resettlement Action Plan (RAP) for Dhaka Sanitation Improvement Project (DSIP) (SD- 07).	Dhaka Water Supply and

Knowledge Management Consultants (KMC) Ltd.

Address: Green Trade Point, Plot-07, Level-08, Bir Uttam AK Khandakar Road, Mohakhali C/A, Dhaka-1212, Bangladesh

Phone: 02-55041065 | Cell: +8801839929400 | Email: kmconsultants1@gmail.com

Website: www.kmcltd.org

SL No.	Duration	Name of the Assignment	Client
			Sewerage Authority
9.	August 2023 to November 2023	Scaling-up Inclusive Climate Resilience of Vulnerable Communities through Locally Led Adaptation (ICRA)	Islamic Relief Bangladesh
10.	August 2023 to November 2023	Conducting Gender Assessment for WASH4UrbanPoor Project – Phase II-Focusing on Gender Transformative WASH agenda	WaterAid Bangladesh
11.	13-Apr-2023 to 31-May-2023	Consultancy Services for Feasibility Study, Preparation of Land Acquisition Plan (LAP), and Resettlement Action Plan (RAP) for the Bhola-Barishal Bridge Project. (Funded by GoB)	Bangladesh Bridge Authority (BBA)
12.	25-Jan-2023 to 30-Jun-2024	TA-6873 BAN: Strengthening the Capacity of Infrastructure Development Company Limited. (Funded by ADB)	Ministry of Finance (MoF), GoB
13.	January 2023 to March 2023	Muktagasa Solar Park Ltd. (Funded by IFC)	IFC
14.	November 2022 to June 2023	TA-9546 BAN: Emergency Assistance Project - Social Safeguards Consultant (52174-001) (Funded by ADB)	ADB
15.	August 2022 to January 2023	Consultancy Services for Determination of the total number of Direct Beneficiaries and End Evaluation Survey under the Low-Income Housing Support Project (LICHSP). (Funded by World Bank)	National Housing Authority (NHA)
16.	August 2022 to December 2022	Consultancy Services for updating Feasibility Study, Detailed Design, Mathematical Modeling Tendering Services, and Construction Supervision Service for the Construction of a Dual Gauge Railway Line from Bogura to Shahid M. Mansur Ali Station, Sirajganj. (Funded by Exim Bank of India)	Bangladesh Railway
17.	July 2022 to January 2024	Preparation of Resettlement Action Plan (RAP) and Implementation of Land Acquisition Plans (LAPs) & Resettlement Action Plans (RAPs) under the Western Economic Corridor & Regional Enhancement (WeCARE) Project. (Funded by World Bank)	Local Government Engineering Department (LGED)
18.	June 2022 to December 2022	Environmental and Social Risk Screening and Mapping Study of Potential Sites for Utility Scale Floating Solar PV (FSPV) in Bangladesh. (Funded by IFC)	IFC
19.	June 2022 to June 2024	External Monitoring Agency (EMA) for Motijheel to Kamalapur Extension under Dhaka Mass Rapid Transit Development Project (MRT Line-6). (Funded by JICA)	Dhaka Mass Transit Company Limited (DMTCL)
20.	May 2022 to August 2022	Preparation of Land Acquisition Plan (LAP) and Resettlement Action Plan (RAP) for Chilmari-Rowmari Bridge for Feasibility Study for Construction of Bridges Over the River Meghna on Shariatpur-Chandpur Road & Gazaria-Munshiganj Road and Preparation of Master Plan for Bangladesh Bridge Authority. (Funded by GoB)	Bangladesh Bridge Authority (BBA)
21.	February 2022 to July 2022	Consultancy Services for Land Acquisition Projects for the Construction of Grid Substations for a Reliable Supply of Electricity. (Funded by GoB)	Power Grid Company of Bangladesh (PGCB) Ltd.
22.	September 2021 to February 2022	. Dhaka Mass Rapid Transit Development Project (Line 1) . Jamuna Railway Bridge Construction Project (1) . Northern Bangladesh Integrated Development Project	Nippon Koei Bangladesh (NKB) Ltd.
23.	February 2022 to June 2022	In-depth Monitoring Study on an Infrastructure Development Project for the Japanese Economic Zone. (Funded by GoB)	Implementation Monitoring & Evaluation

SL No.	Duration	Name of the Assignment	Client
			Department (IMED)
24.	December 2021 to December 2024	Recruitment of NGO/Consulting Firm for Preparation & Assistance for Implementation of Resettlement Plan for Package-3.1 and 3.2 Distribution Reinforcement Pipeline including feeder line under DESWP, Dhaka WASA. (Funded by ADB)	Dhaka Water Supply and Sewerage Authority
25.	November 2021 to December 2021	Technical Support for E-waste Management in Bangladesh for Bangladesh Environmental Sustainability and Transformation (BEST) Project. (Funded by World Bank)	Department of Environment (DoE), GoB
26.	May 2021 to August 2021	Construction Works of Lalkuthi Community Center and Gardens Bongshal Fazlul Karim Community Center Improvement under Dhaka City Neighborhood Upgrading Project (DCNUP). (Funded by World Bank)	Dhaka South City Corporation (DSCC)
27.	October 2021 to January 2022	Consultancy Services for Feasibility Study and Preliminary Design for Construction of Subway in Dhaka City of Bangladesh. (Funded by GoB)	Bangladesh Bridge Authority (BBA)
28.	September 2021 to September 2023	Survey Firm for Client Satisfaction Survey (CSS) under Bangladesh Insurance Sector Development Project (BISDP). (Funded by World Bank)	Insurance Development and Regulatory Authority (IDRA)
29.	July 2021 to June 2023	Consultancy Services for Feasibility Studies and Preparation of Detailed Design under Coastal Embankment Improvement Project, Phase-II. (Funded by World Bank)	Bangladesh Water Development Board (BWDB)
30.	15-Jun-2021 to 30-Jun-2021	Development of web-based GRM for Bangladesh Regional Water Transport Project Phase-I (BRWTP-I). (Funded by World Bank)	Bangladesh Inland Water Transport Authority (BIWTA)
31.	May 2021 to June 2021	Collecting Geodetic Control Points and Geo-referencing to the LAP and RAP Works for Feasibility Study and Detailed Design for the Construction of an Elevated Expressway/Road from Mithamain Sadar to Marichkhali Bazar Karimganj Upazila, Kishoreganj District via Mithamain Cantonment. (Funded by GoB)	Bangladesh University of Engineering and Technology (BUET)
32.	March 2021 to June 2021	Preparation of Land Acquisition Plan (LAP) and Resettlement Action Plan (RAP) for Feasibility Study and Detailed Design for the Construction of an Elevated Expressway/Road from Mithamain Sadar to Marichkhali Bazar Karimganj Upazila, Kishoreganj District via Mithamain Cantonment. (Funded by GoB)	Bangladesh University of Engineering and Technology (BUET)
33.	February 2021 to January 2022	Resettlement Implementation Consultant (RIC) for Assisting in the Preparation, Implementation, and Monitoring of RAP & LRP Activities Related to a 50 MW ac/62.5 MW dc Solar Project in Nilphamari, Bangladesh. (Funded by IFC)	IFC
34.	January 2021 to June 2021	Updating of Environmental & Social Impact Assessment (ESIA) and Preparing a Resettlement Action Plan (RAP) of BSEZ. (Funded by IFC)	Bangladesh Economic Zones Authority (BEZA)
35.	January 2021 to December 2025	RAP Implementing Agency (RAPIA) for Preparation and Implementation of Land Acquisition Plans (LAPs) and Resettlement Action Plans (RAPs) for the MRT Line-5 (Northern Route). (Funded by JICA)	Dhaka Mass Transit Company Limited (DMTCL)
36.	October 2020 to March 2021	Hiring Training Service Provider Facilitation and Quality Assurance of Livelihoods Skills Training. (Funded by UNDP)	UNDP

Knowledge Management Consultants (KMC) Ltd.

Address: Green Trade Point, Plot-07, Level-08, Bir Uttam AK Khandakar Road, Mohakhali C/A, Dhaka-1212, Bangladesh

Phone: 02-55041065 | Cell: +8801839929400 | Email: kmconsultants1@gmail.com

Website: www.kmcltd.org

SL No.	Duration	Name of the Assignment	Client
37.	September 2020 to October 2020	Consultancy Services for Land Acquisition (Collection of Khatian, Preparation of “Cha” Form & Video Capturing) for LPG Terminal at Moheshkhali, Cox’s Bazar. (Funded by JICA)	Bangladesh Petroleum Corporation (BPC)
38.	July 2020 to August 2020	Preparation of Land Acquisition Plan (LAP), Resettlement Action Plan (RAP), Social Management Plan (SMP) & Social Action Plan (SAP) Document for Design and Supervision of Consultation Services for Construction of Kadamrasul Bridge Over the River Shitalakhya Near 5 No. Gudaraghat of Narayanganj City Corporation. (Funded by GoB)	Local Government Engineering Department (LGED)
39.	July 2020 to April 2023	Preparation of Resettlement Action Plan (RAP) for Chattogram-Cox’s Bazar Highway Improvement Project in Bangladesh. (Funded by JICA)	Roads and Highways Department (RHD), GoB
40.	March 2020 to May 2020	Organizational and Quality Assurance of Life Skills Training. (Funded by UNDP)	UNDP
41.	March 2020 to June 2020	Survey of Socio-cultural Environment, Social Impact Assessment (SIA), and Social Management Plan (SMP) under Feasibility Study for Protection and Development of Cox's Bazar Sea Beach. (Funded by GoB)	Bangladesh Water Development Board (BWDB)
42.	March 2020 to June 2020	Social Baseline & Social Management Plan for Feasibility Study for Restoration of Sangu-Matamuhuri River Basin. (Funded by GoB)	Bangladesh Water Development Board (BWDB)
43.	February 2020 to March 2020	Data Entry and Data Management for S3 and S4 Sites (Cargo and Passenger Terminals for the Bangladesh Regional Waterway Transport Project-1 (BRWTP-1)). (Funded by World Bank)	Bangladesh Inland Water Transport Authority (BIWTA)
44.	January 2020 to May 2020	Preparation of Land Acquisition Plan (LAP) & Resettlement Action Plan (RAP) for Chattogram-Cox's Bazar Expressway (through PPP) Project. (Funded by GoB)	Bangladesh University of Engineering and Technology (BUET)
45.	October 2019 to November 2019	Geo-referencing of Mouza Map for Preparatory Study for Chattogram-Cox’s Bazar Highway Project in Bangladesh. (Funded by JICA)	Roads and Highways Department (RHD), GoB
46.	July 2019 to October 2019	Updating the Resettlement Action Plan (RAP) and Development of an IT System for the Improvement of Sylhet- Tamabil Road to 4 Lane Highway and Construction of Slow- Moving Vehicular Traffic (SMVT) Lane on Both Sides. (Funded by AIIB)	Roads and Highways Department (RHD), GoB
47.	July 2019 to October 2019	Survey for Dhaka BRT and City Bus Services Project. (Funded by GoB)	Bangladesh University of Engineering and Technology (BUET)
48.	June 2019 to August 2019	Market Interventions for Nutritional Improvement Bangladesh Survey. (Funded by BAU)	Bangladesh Agricultural University
49.	April 2019 to April 2024	RAP Implementing Agency of Dhaka Mass Rapid Transit Development Project (MRT Line 1). (Funded by JICA)	Dhaka Mass Transit Company Limited (DMTCL)

SL No.	Duration	Name of the Assignment	Client
50.	December 2018 to July 2020	RAP Implementation of Akhaura-Agartala Dual Gauge Railway Link (Bangladesh Portion) Project. (Funded by Government of India)	Bangladesh Railway
51.	November 2018 to December 2018	Updating of Resettlement Action Plan (RAP) for Enhancement and Strengthening of Power Transmission Network in Eastern Region Project at Laksham and Muradnagar Under Power Grid Company of Bangladesh (PGCB) Ltd. (Package No. S - 119), Rural Electrification and Renewable Energy Development II (RERED II) Project. (Funded by World Bank)	Power Grid Company of Bangladesh (PGCB) Ltd.
52.	September 2018 to June 2020	Carrying Out Land Acquisition & Requisition Related Activities for the Pipeline for Transportation of White Petroleum Oil from Chattogram to Dhaka. (Funded by World Bank)	Bangladesh Petroleum Corporation (BPC)
53.	August 2018 to October 2018	Preparation of Resettlement Plan (RP) for Padma Bridge Rail Link Project (PBRLP). (Funded by Exim Bank of China)	Bangladesh Bridge Authority (BBA)
54.	July 2018 to September 2018	Situational Analysis and Needs Assessment on Trafficking of Male Youth and Adults in Bangladesh. (Funded by USAID)	Winrock International, Bangladesh
55.	April 2018 to July 2019	Technical Assistance for Dhaka-Chattogram-Cox's Bazar Rail Project Preparatory Facility. (Funded by ADB)	Bangladesh Railway
56.	April 2018 to June 2018	Feasibility Study for Improvement of Ghagot, Bangshi, Banar Lower, Nagda, Zinai, and Gomoti Rivers for Restoration of Dry Season Flow, Navigability Improvement, and Flood and Erosion Management. (Funded by GoB)	Bangladesh Water Development Board (BWDB)
57.	February 2018 to June 2018	Preparation of Social Impact Assessment (SIA) for Bangladesh Municipal Water Supply and Sanitation Project. (Funded by World Bank)	Department of Public Health Engineering (DPHE), GoB
58.	February 2018 to May 2018	Preparation of Environmental Impact Assessment (EIA) for 15 Bridges Over the Different Rivers at Kishoreganj, Mymensingh, Jamalpur, Sunamganj, Sylhet, Tangail, and Gazipur Districts. (Funded by GoB)	Local Government Engineering Department (LGED), GoB
59.	January 2018 to April 2018	Social Impact Assessment (SIA) & Stakeholder Management Plan (SMP) for Bangabandhu Railway Bridge Construction Project (BRBCP). (Funded by JICA)	Bangladesh Railway
60.	January 2018 to September 2018	Consultancy Services for Preparation of Social Impact Assessment (SIA) and Resettlement Policy Framework (RPF) Under the TA Project for the Preparatory Activities of the Proposed Dhaka Sanitation Improvement Project (Phase-1). (Funded by World Bank)	Dhaka Water Supply and Sewerage Authority
61.	December 2017 to January 2019	The Annual External Financial Audit and Performance & Safeguards Compliance Assessment of (FYs 2016-17 & 2017- 18) Union Parishads of Sherpur, Tangail & Jamalpur Districts for Local Governance Support Project-3 (LGSP-3). (Funded by GoB)	Local Government Engineering Department (LGED)
62.	December 2017 to June 2018	Preparation of Land Acquisition & Resettlement Plan (LARP) for Approach/Access Road of Detail Engineering Design of 14 Bridges over Different Rivers (Package No: CIB-S-71), "Construction of Important Bridges on Rural Roads Project ". (Funded by GoB)	Local Government Engineering Department (LGED)
63.	December 2017 to June 2018	Detailed Digital Topographical Survey, Sub-soil Investigation, Preparation of Resettlement Action Plan (RAP), Land Acquisition Plan (LAP), Social Impact Assessment (SIA), and Environmental Impact Assessment (EIA) for 30 km Dual Gauge Line from Feni	Bangladesh Railway

Knowledge Management Consultants (KMC) Ltd.

Address: Green Trade Point, Plot-07, Level-08, Bir Uttam AK Khandakar Road, Mohakhali C/A, Dhaka-1212, Bangladesh

Phone: 02-55041065 | Cell: +8801839929400 | Email: kmconsultants1@gmail.com

Website: www.kmcltd.org

SL No.	Duration	Name of the Assignment	Client
		to India – Bangladesh Border (Zero Line). (Funded by GoB & Indian Government)	
64.	December 2017 to September 2018	Social Impact Assessment (SIA), Preparation of Land Acquisition Plan (LAP) and Resettlement Action Plan (RAP) for a Feasibility Study for the Construction of Overpass/Underpass in Narayanganj-Joydebpur Section of Bangladesh Railway. (Funded by ADB)	Bangladesh Railway
65.	November 2017 to January 2018	External Monitoring of South Asia Sub Regional Economic Cooperation Dhaka-Northwest Corridor Road Project. (Phase- 2). (Funded by ADB)	Asian Development Bank (ADB)
66.	November 2017 to February 2018	Land Acquisition & Resettlement Survey and Preparation of Land Acquisition Plan (LAP) & Resettlement Action Plan (RAP) for Muktarpur Bridge Approach Road Project. (Funded by GoB)	Bangladesh University of Engineering and Technology (BUET)
67.	November 2017 to January 2018	Environmental Impact Assessment (EIA) and Approval of Environmental Clearance Certificate and Preparation of Resettlement Action Plan (RAP) for Construction of Akhaura-Agartala Dual Gauge Railway Link (Bangladesh Portion). (Funded by GoB)	Bangladesh Railway
68.	October 2017 to November 2017	Environmental Impact Assessment (EIA) for Environmental Clearance of SCBL Upcoming 132 KV Overhead Transmission Line. (Funded by Seven Circles Cement Ltd.)	Seven Circles Cement Ltd.
69.	August 2017 to February 2021	Preparation and Implementation of the Resettlement Policy Framework (RPF) and Resettlement Action Plan (RAP) for Saidabad Water Treatment Plant Project, Phase-III. (Funded by European Investment Bank)	Dhaka Water Supply and Sewerage Authority
70.	June 2017 to December 2017	Preparation of Resettlement Action Plan (RAP) for Enhancement and Strengthening of Power Transmission Network in Eastern Region Project Under Power Grid Company of Bangladesh (PGCB) Ltd. (Package No. S -107). (Funded by World Bank)	Power Grid Company of Bangladesh (PGCB) Ltd.
71.	April 2017 to May 2017	Social Safeguard Survey Works and Preparation of a Draft RAP or ARAP of the Shamasundari Khal Rehabilitation and the Kuksha-Ghogat River Excavation Work at Rangpur City Corporation. (Funded by JICA)	Local Government Engineering Department (LGED)
72.	April 2017 to July 2017	Social Impact Study for Development of the Land at Moheshkhali Island by Dredging Chars, Shoals for Land- Based LNG Terminal. (Funded by GoB)	Gas Transmission Company Limited (GTCL)
73.	February 2017 to November 2018	Consultancy for the Development of a Web and Offline-based Automated M&E System, with Training and Support Services. (Funded by USAID)	CARE Bangladesh
74.	December 2016 to March 2017	Social Safeguard Survey Works and Preparation of a Draft RAP or ARAP for City Governance Project (CGP) for Targeted Five (5) City Corporations (Turag Bridge). (Funded by JICA)	Local Government Engineering Department (LGED)
75.	December 2016 to March 2017	Social Safeguard Survey Works and Preparation of a Draft RAP or ARAP for City Governance Project (CGP) for Targeted Five (5) City Corporations (Gazipur Flyover). (Funded by JICA)	Local Government Engineering Department (LGED)
76.	December 2016 to March 2017	Social Safeguard Survey Works and Preparation of a Draft RAP or ARAP for City Governance Project (CGP) for Targeted Five (5) City Corporations (Narayanganj). (Funded by JICA)	Local Government Engineering Department (LGED)

SL No.	Duration	Name of the Assignment	Client
77.	November 2016 to December 2017	Social Impact Study for Extension of Runway at Cox's Bazar Airport (2 nd Phase) Project. (Funded by GoB)	Civil Aviation Authority (CAAB) Bangladesh
78.	November 2016 to December 2016	Social Impact Study for 33 km Alignment from Dhaka- Joydebpur 3rd Line 4th Line Rail Project. (Funded by GoB & Indian Government)	Bangladesh Railway
79.	November 2016 to October 2017	Environmental Impact Assessment (EIA) and Approval of Environmental Clearance Certificate for Dhaka-Joydebpur 3 rd Line 4 th Line Rail Project. (Funded by GoB & Indian Govt.)	Bangladesh Railway
80.	March 2016 to December 2019	External Monitoring of the Resettlement Process for Dhaka Mass Rapid Transit Development Project (DMRTDP). (Funded by JICA)	Dhaka Mass Transit Company Limited (DMTCL)
81.	February 2016 to April 2016	Preparation of Resettlement Action Plan (RAP) and Consultation Report for Regional Cooperation and Integration Project SP-2. (Funded by ADB)	Bangladesh Railway
82.	January 2016 to June 2016	Updating of Resettlement Plans (RPs) and Preparation of Property Valuation Survey (PVS), PSA Report, and Affordability Report for Sub-Regional Transport Project Preparatory Facility (SRTPF). (Funded by ADB)	Roads and Highways Department (RHD), GoB
83.	October 2015 to November 2015	Preparation of Environmental Impact Assessment (EIA) Report for Rural Transport Improvement Project-II (RTIP-II). (Funded by GoB & Indian Government)	Local Government Engineering Department (LGED)
84.	September 2015 to October 2015	Preparation of Resettlement Action Plan (RAP) for Railway Overpass at 145th km of Joydebpur-Tangail-Jamalpur National Highway (N4) under Jamalpur Road Division of RHD. (Funded by ADB)	Roads and Highways Department (RHD), GoB
85.	September 2015 to March 2016	Preparation of Social Impact Assessment Report, Social Management Framework, and Consultation Report for Dhaka-Chittagong Inland Water Transport Corridor Project. (Funded by World Bank)	Bangladesh Inland Water Transport Authority (BIWTA)
86.	August 2015 to February 2024	Preparation of Resettlement Action Plan (RAP), Land Acquisition Plan (LAP), Social Impact Assessment (SIA), and Implementation of the Resettlement Action Plan (RAP) for Coastal Embankment Improvement Project, Phase-1 (CEIP-1). (Funded by World Bank)	Bangladesh Water Development Board (BWDB)
87.	June 2015 to October 2015	Preparation of Resettlement Action Plan (RAP) & Land Acquisition Plan (LAP) for a Feasibility Study on the Construction of a Multilane Road Tunnel Under Karnaphuli River. (Funded by the Government of China)	Roads and Highways Department
88.	June 2015 to July 2015	Preparation of Land Acquisition Proposal (LAP) for Saidabad Water Treatment Plant Project (Phase-3). (Funded by GoB)	Dhaka Water Supply and Sewerage Authority
89.	May 2015 to June 2015	Preparation of Social Assessment Report for Chittagong Port Strategic Master Plan. (Funded by ADB)	Chittagong Port Authority (CPA)
90.	April 2015 to February 2020	Implementation of Resettlement Action Plan (RAP) for Padma Multipurpose Bridge Project. (Funded by GoB)	Bangladesh Bridge Authority (BBA)
91.	December 2014 to March 2015	Preparation of Resettlement Action Plan (RAP) & Land Acquisition Plan (LAP) for Dhaka-Ashulia Elevated Express Way Project. (Funded by GoB)	Bangladesh Bridge Authority (BBA)
92.	November 2014 to December 2014	Preparation of Social Assessment Report, Resettlement Action Plan (RAP), Income Livelihood Restoration Plan (ILRP), etc. for River Bank Improvement Project (RBIP). (Funded by	Bangladesh Water Development Board (BWDB)

Knowledge Management Consultants (KMC) Ltd.

Address: Green Trade Point, Plot-07, Level-08, Bir Uttam AK Khandakar Road, Mohakhali C/A, Dhaka-1212, Bangladesh

Phone: 02-55041065 | Cell: +8801839929400 | Email: kmconsultants1@gmail.com

Website: www.kmcltd.org

SL No.	Duration	Name of the Assignment	Client
		World Bank)	
93.	01-May-2014 to 31-May-2014	Preparation of Video Filming and Photography for Well Field Construction Project (WFCP).	Dhaka Water Supply and Sewerage Authority
94.	January 2014 to December 2016	Preparation and Implementation of the Resettlement Action Plan (RAP) for the Padma-Jashaldia Water Treatment Plant Project. (Funded by the Government of China)	Dhaka Water Supply and Sewerage Authority
95.	November 2013 to June 2014	Preparation of Resettlement Policy Framework (RPF) and Social Assessment Report for Pro-Poor Slums Integration Project (PPSIP). (Funded by World Bank)	National Housing Authority (NHA)
96.	November 2013 to June 2014	Preparation of Social Assessment Report, Resettlement Action Plan (RAP), and Land Acquisition Plan (LAP) for the Construction of the Urir Char-Noakhali Cross Dam Project (UCNCP). (Funded by World Bank)	Bangladesh Water Development Board (BWDB)
97.	June 2013 to June 2016	External Monitoring of Updated Full Resettlement Plan (UFRP) for Tongi-Bhairab Bazar Double Line Including Signaling Project. (Funded by ADB)	Bangladesh Railway
98.	May 2013 to February 2015	Preparation of Resettlement Action Plan (RAP) for Sub- Regional Transport Project Preparatory Facility (SRTPF). (Funded by ADB)	Roads and Highways Department (RHD), GoB
99.	April 2013 to November 2013	Preparation of Consultation Report, PVS Report, and Data Generation for Resettlement Plan Preparation for Regional Cooperation and Integration Project (RCIP)-Rail Component. (Funded by GoB)	Bangladesh Railway
100.	March 2013 to June 2013	Conduct a Socio-Economic Survey (SES), Focus Group Discussion (FGD), and Preparation of Reports for a Data Collection Survey on Early Warning and Disaster Information Systems in Coastal Areas. (Funded by JICA)	Japan International Cooperation Agency (JICA)
101.	August 2012 to October 2012	Preparation of Resettlement Plan (RP) for Gas-fired Combined Cycle Power Plant Project (Bhola). (Funded by ADB)	Bangladesh Power Development Board (BPDB)
102.	August 2012 to September 2012	Conducting Monitoring Survey and Data Generation for Monitoring Report Preparation for India-Bangladesh Electrical Grid Interconnection Project (Kushtia). (Funded by ADB)	Power Grid Company of Bangladesh (PGCB) Ltd.
103.	May 2012 to June 2012	Preparation of Baseline Report for Sub-Regional Transport Corridor Project (SRTCP). (Funded by ADB)	Asian Development Bank (ADB)
104.	May 2012 to May 2014	Preparation and Implementation of Resettlement Action Plan (RAP) for Dhaka Water Supply and Sanitation Project (DWSSP), (Kamalapur and Rampura Storm Water Pumping Stations). (Funded by World Bank)	Dhaka Water Supply and Sewerage Authority
105.	February 2012 to August 2012	Feasibility Study for Preparation of Social Impact Assessment (SIA) & Resettlement Action Plan (RAP) for Construction of New Bridges Parallel to Kanchpur, Meghna, and Gomoti Bridges. (Funded by JICA)	Roads and Highways Department (RHD), GoB
106.	January 2012 to March 2013	Preparation of Social Impact Assessment (SIA) Report, Land Acquisition Plan (LAP), and Resettlement Action Plan (RAP) for a Feasibility Study for the Construction of the Flyover from Shantinagar to Dhaka-Mawa (Jhilmil) Via the 4 th New Bridge over Buriganga River. (Funded by GoB)	Rajdhani Unnayan Kartripakkha (RAJUK)

SL No.	Duration	Name of the Assignment	Client
107.	January 2012 to February 2012	Data Entry, Data Generation for Greater Dhaka Sustainable Urban Transport Project Consultancy Package 2 (EPMC). (Funded by ADB)	Bangladesh Road Transport Authority (BRTA)
108.	January 2012 to February 2012	Preparation of Baseline Report for Greater Dhaka Sustainable Urban Corridor Transport Project. (Funded by ADB)	Roads and Highways Department (RHD), GoB
109.	December 2011 to February 2012	Preparation of Social Impact Assessment (SIA) Report for Feasibility Study for the Construction of a Dam to Provide Safe Water to the Teknaf Pourashava. (Funded by UNICEF)	Department of Public Health and Engineering (DPHE), GoB
110.	October 2011 to February 2012	Preparation of the Resettlement Plan (RP) for a Feasibility Study of the Bekutia Bridge. (Funded by GoB)	Bangladesh Bridge Authority (BBA)
111.	October 2011 to July 2012	Preparation of Baseline Report for Urban Public and Environmental Health Sector Development Project. (Funded by ADB)	Ministry of Local Government, Rural Development and Cooperatives
112.	August 2011 to October 2012	Preparation of Resettlement Action Plan (RAP), Land Acquisition Plan (LAP), and Social Impact Assessment (SIA) for Feasibility Study in the Construction of a Tunnel under the River Karnaphuli. (Funded by GoB)	Bangladesh Bridge Authority (BBA)
113.	June 2011 to June 2013	Updating of Land Acquisition Plan (LAP) for Feasibility Studies and Detailed Design for Coastal Embankment Improvement Project, Phase-1. (CEIP-1). (Funded by World Bank)	Bangladesh Water Development Board (BWDB)
114.	June 2011 to June 2013	Preparation of Social Impact Assessment (SIA) Report, Social Management Resettlement Policy Framework (SMRPF), and Resettlement Action Plan (RAP) for Feasibility Study of Coastal Embankment Improvement Project, Phase-I (CEIP-1). (Funded by World Bank)	Bangladesh Water Development Board (BWDB)
115.	April 2011 to June 2011	Preparation of Resettlement Action Plan (RAP) for Southwest Area Integrated Water Resources Planning and Management Project (Narail Subproject). (Funded by ADB)	Bangladesh Water Development Board (BWDB)
116.	March 2011 to October 2011	Implementation of Resettlement Action Plan (RAP) for Dhaka Water Supply and Sanitation Project (Bounia Khal). (Funded by World Bank)	Dhaka Water Supply and Sewerage Authority
117.	March 2011 to April 2011	Preparation of Baseline report for Second Chittagong Hill Tracts Rural Development Project (Rangamati, Bandaraban & Khagrachari Districts). (Funded by ADB)	Asian Development Bank (ADB)
118.	December 2010 to March 2011	Preparation of Resettlement Plan (RP) for Eastern Bangladesh Bridge Improvement Project (63 Bridges). (Funded by JICA)	Road and Highways Department (RHD), GoB
119.	September 2010 to November 2010	Preparation of Resettlement Action Plan (RAP) for Southwest Area Integrated Water Resources Planning and Management Project (Chenchuri Beel Subproject). (Funded by ADB)	Bangladesh Water Development Board (BWDB)
120.	March 2010 to April 2010	Preparation of Baseline Report for Second Chittagong Hill Tracts Rural Development Project (Rangamati). (Funded by ADB)	Asian Development Bank (ADB)
121.	October 2009 to November 2009	Preparation of Baseline Report for a Pilot Project on Keeping Safe Water and Arsenic Mitigation. (Funded by UNICEF)	Department of Public Health and

<i>SL No.</i>	<i>Duration</i>	<i>Name of the Assignment</i>	<i>Client</i>
			Engineering (DPHE), GoB
122.	August 2009 to September 2009	Preparation of Resettlement Plan (RP) for Feasibility Study of the Third Shitalakhya Bridge Project. (Funded by GoB)	Roads and Highways Department (RHD), GoB
123.	March 2009 to July 2009	Preparation of Resettlement Plan (RP) for Private Sector Development Support Project (Meghna EPZ). (Funded by World Bank)	Bangladesh Export Processing Zone Authority (BEPZA)
124.	February 2009 to April 2009	Preparation of Participatory Rural Appraisal (PRA) Report for Additional Drainage Study to Determine a Sustainable Solution for the Drainage Problems in the Baggar Dona River Catchments Area. (Funded by ADB)	Bangladesh Water Development Board (BWDB)
125.	January 2009 to March 2009	Preparation of Social Impact Assessment (SIA) Report for Feasibility Study of Land Reclamation from the Bay of Bengal. (Funded by GoB)	Bangladesh Water Development Board (BWDB)
126.	October 2008 to December 2008	Preparation of Resettlement Plan (RP) for Ashuganj- Bakhrabad-Chittagong Gas Transmission Pipeline Project. (Funded by ADB)	Gas Transmission Company Limited (GTCL)

PHOTO GALLERY OF OUR ACTIVITIES



PRECAUTIONARY SAFETY MEASURES OF KMC TO PREVENT COVID-19 INFECTION

The COVID-19 pandemic in Bangladesh is part of the worldwide pandemic of coronavirus disease 2019 (COVID-19) caused by severe acute respiratory syndrome coronavirus 2 (SARS- CoV-2). The pandemic has spread day by day over the whole nation and the number of affected people has been increasing. We are actively taking precautionary safety measures to prevent Covid-19 infection in all of our staff, including:



Protective masks



Increased cleaning



Disinfecting



Hand washing



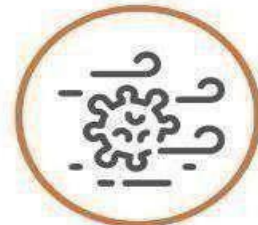
Protective gloves



Social distancing



Protective gowns



UV/HEPA air filters

PHOTO GALLERY OF OUR PRECAUTIONARY SAFETY MEASURES TO PREVENT COVID-19 INFECTION

